

Survey Municipal Common Service Costs

September 28, 2015



The Basis for the Survey

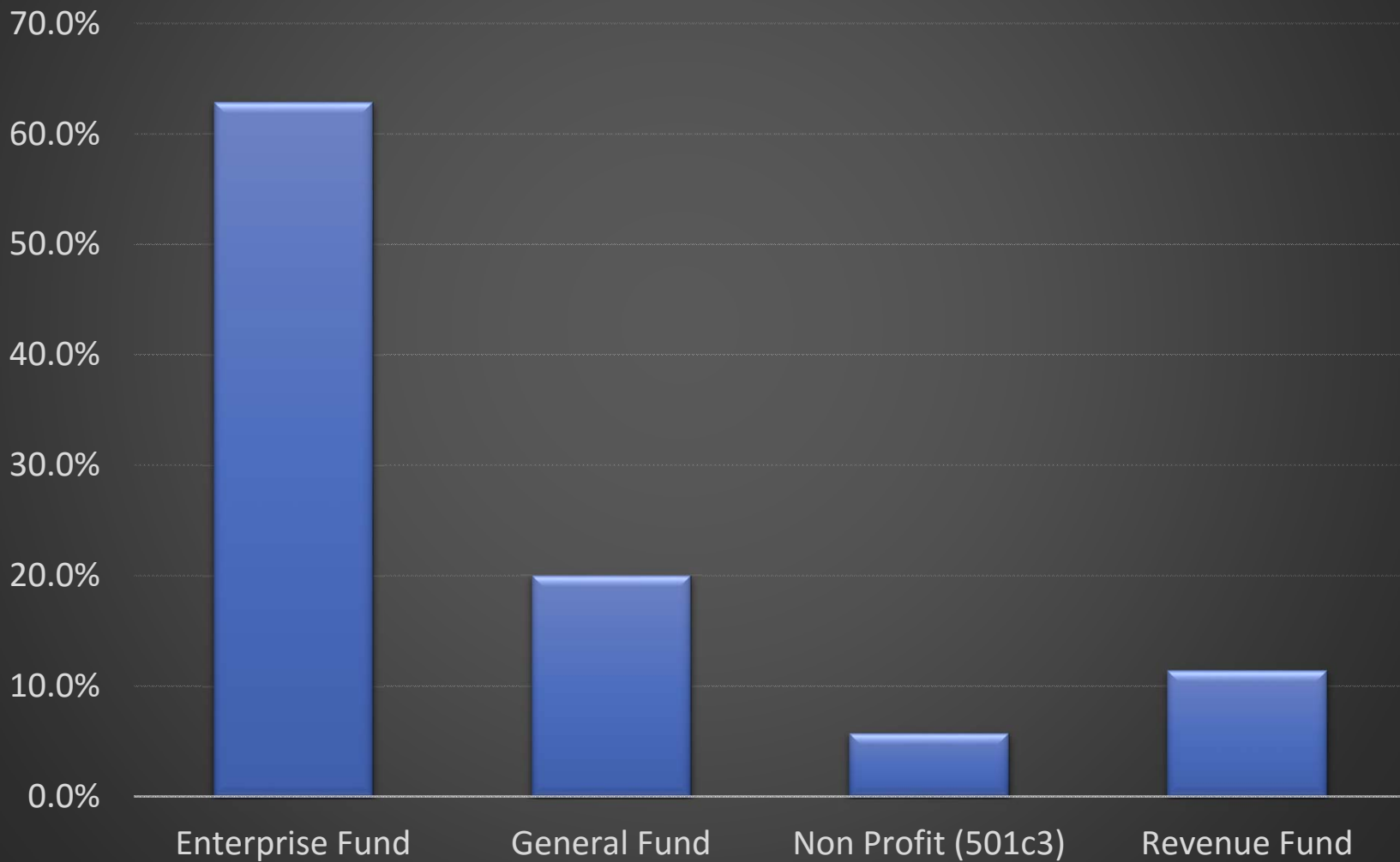
Municipal golf courses are frequently assessed fees, often referred to as a common service allocation, by a City/County's general fund. Services sometimes provided by the general fund can be administrative, accounting (financial statements), budgeting, employment services, legal, marketing, payroll, purchasing, etc. These fees can vary widely.

There are over 2,400 municipal golf courses in the United States.

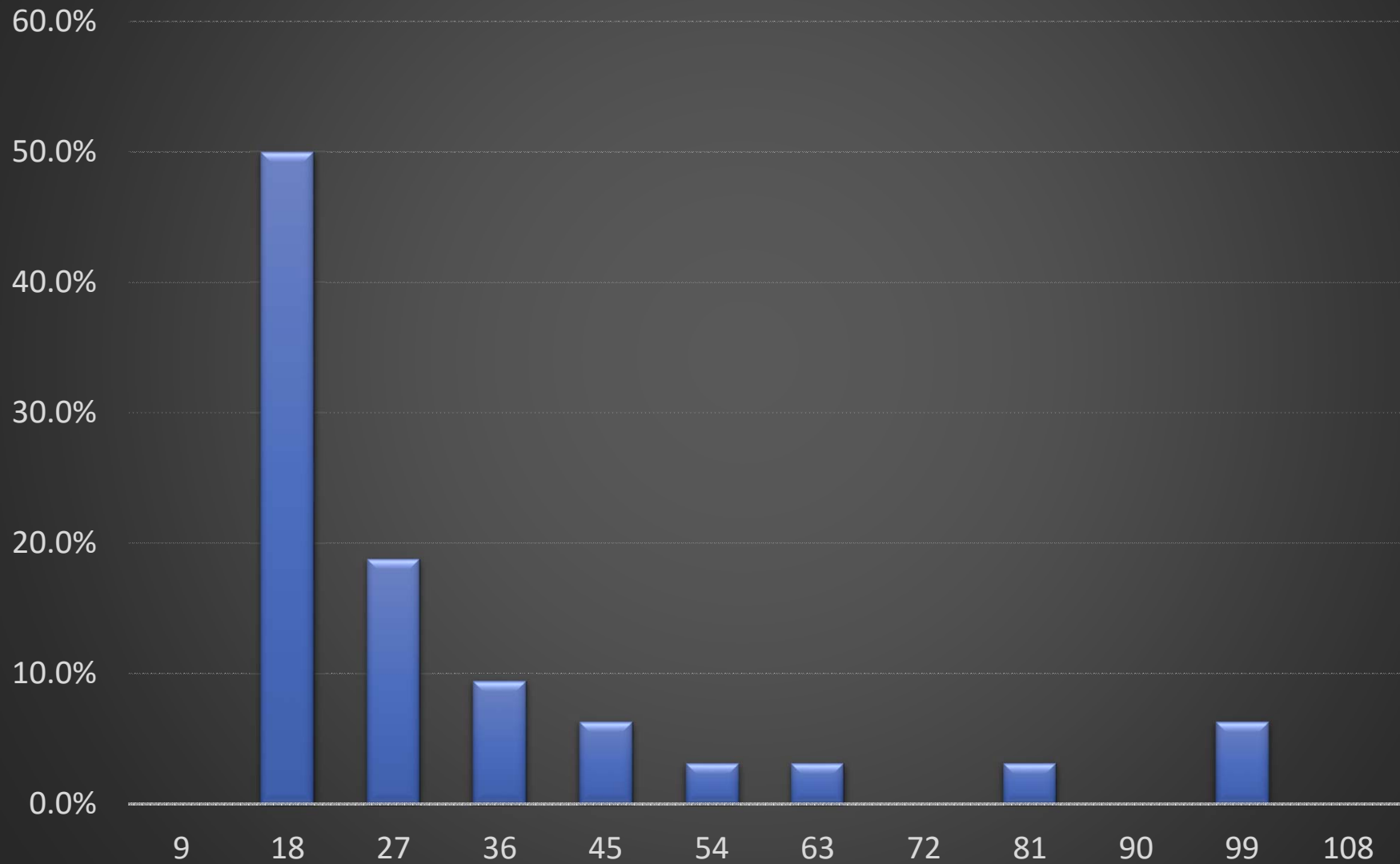
We emailed the survey to those in the JJ Keegan+ database and created a filter to solicit responses from only municipal golf courses. We received 58 responses from municipal golf courses. To ensure the integrity of the results, 33 responses completed the five questions fully.

We also presented the opportunity to the 75 individuals in attendance at the NRPA Show to complete the survey. Those results will be published at a latter date.

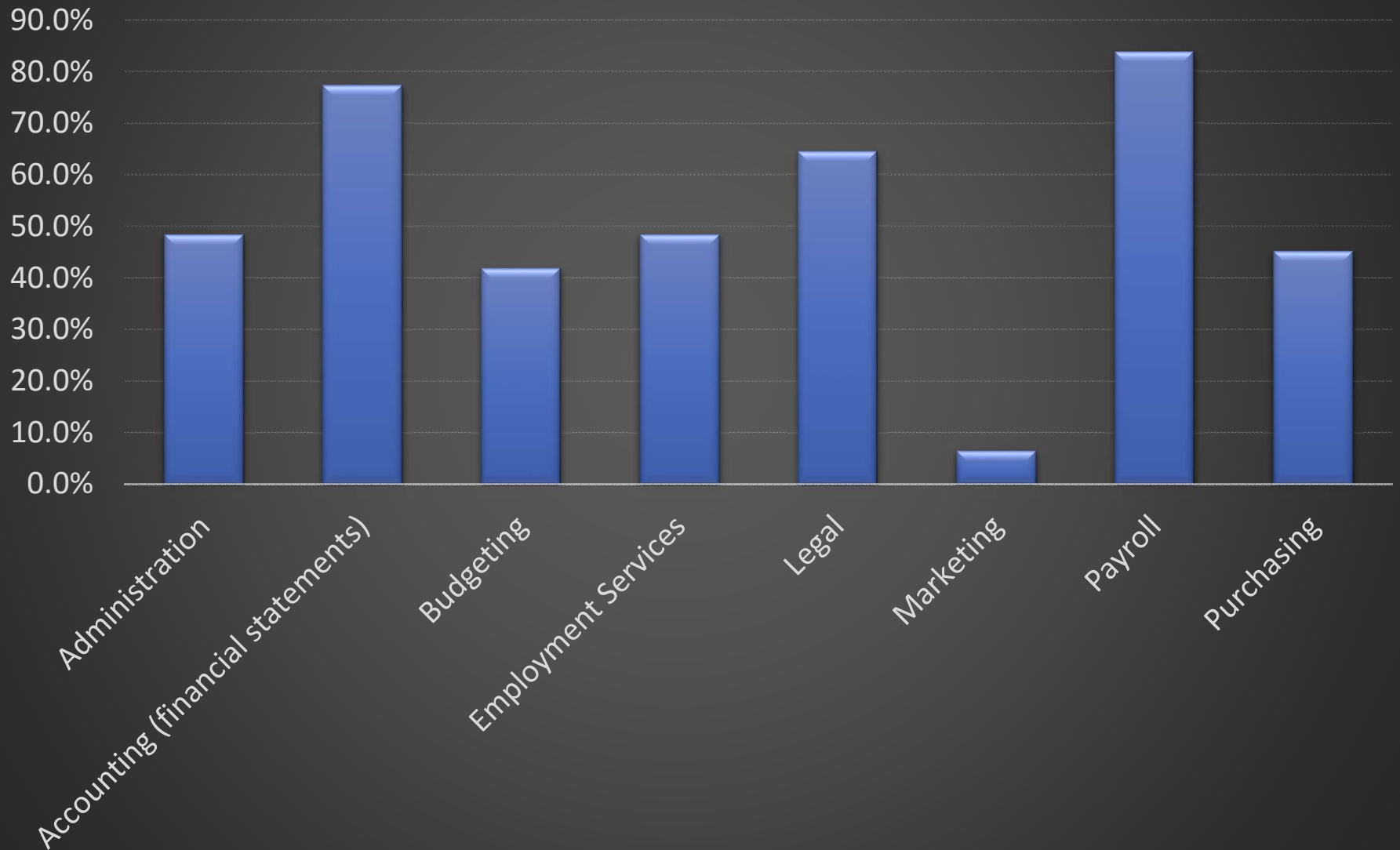
What is the Organizational Structure in Which Your Municipal Course Operates?



How Many Holes of Golf Are Owned by the Municipality?

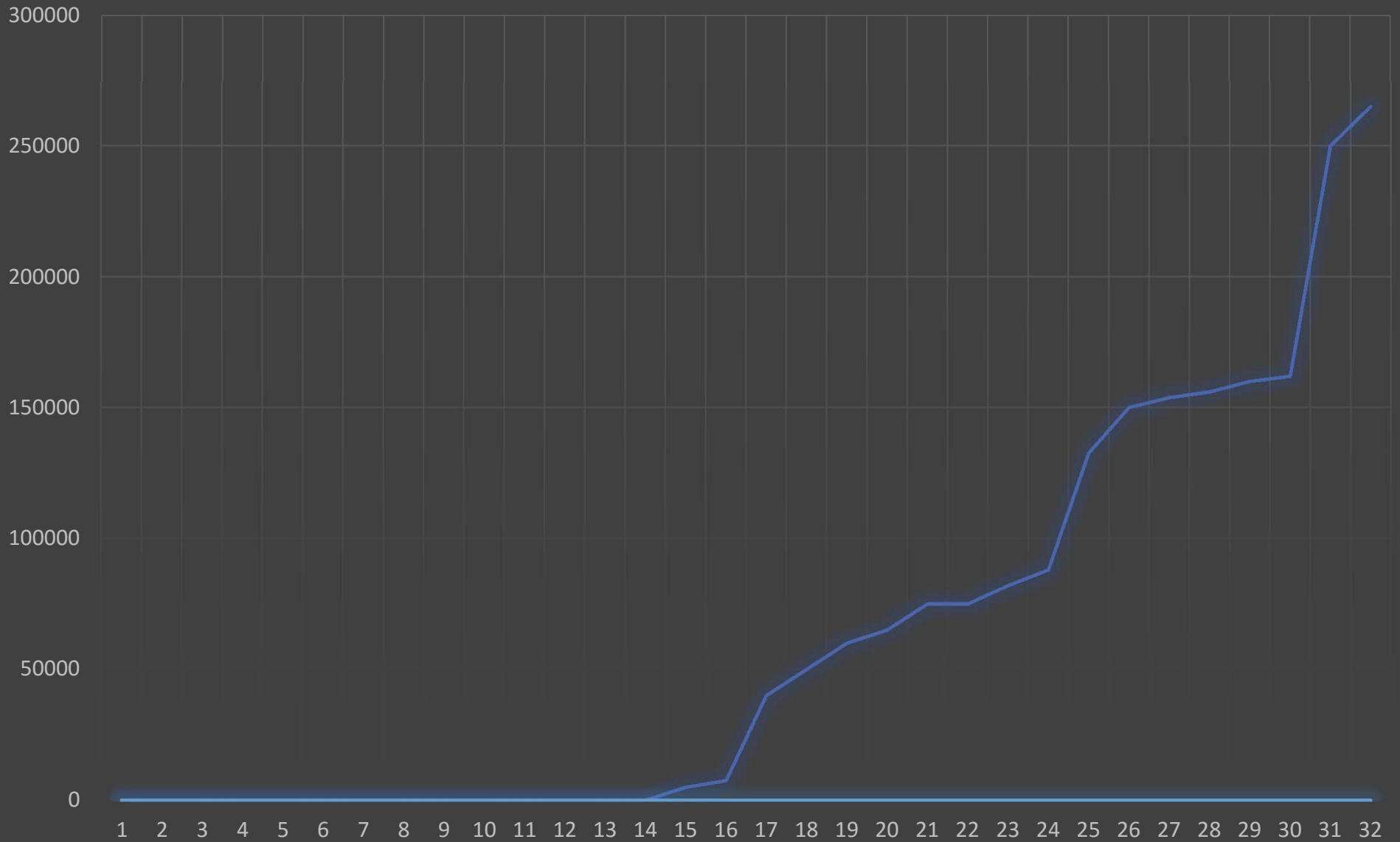


What services are provided for you by the General Fund?



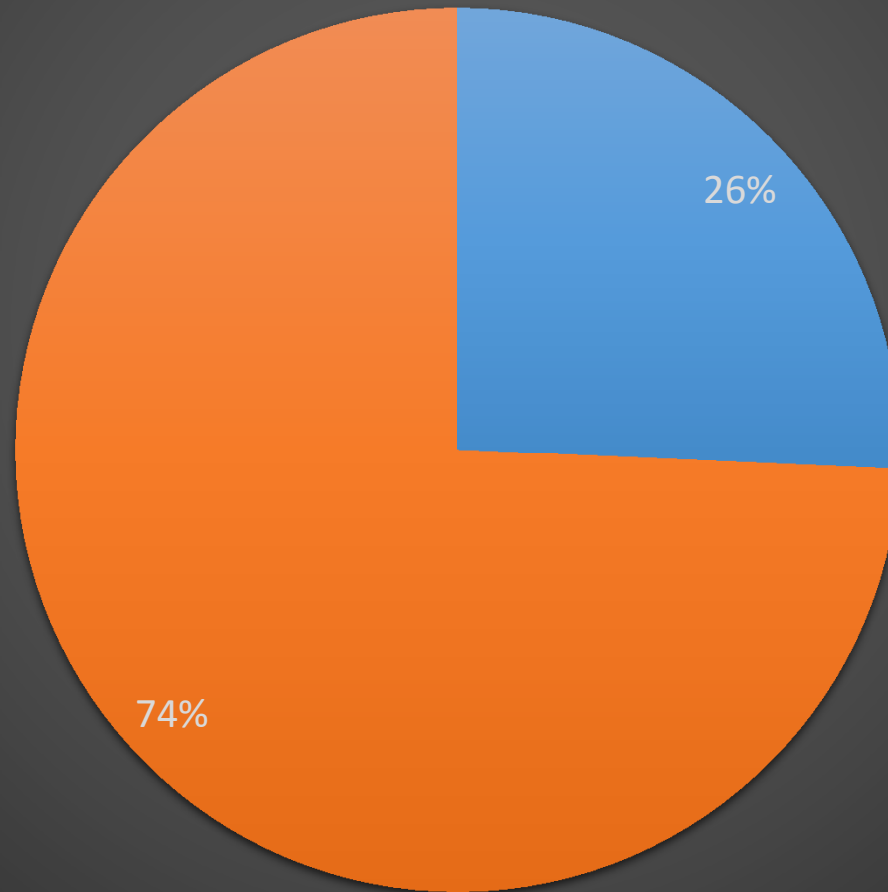
Common Service Allocation Cost Per Facility: Average \$2,615 per hole

Series1 Series2



Do you use the services of a third party management company?

■ Yes ■ No



List of Respondents to the Survey

Apple Valley
Asbury
Bay County
Bensenville Park District
Brown County
Calvert County
Cambridge
Casper Municipal Golf Course
Champaign County Forest Park District
Channahon Park District
City of Ann Arbor
City of Arlington
City of Ballura
City of Baytown
City of Bloomington
City of Brady
City of Brookings
City of Garland
City of Grand Rapids
City of Great Falls

City of Idaho Falls
City of Oklahoma City
City of Owatona
City of Santa Cruz
City of Tempe
City of Winter Park
Colorado Springs/ El Paso
Columbus - Ohio
Cook County
County of Kauai
County of San Luis Obispo
Delray Beach
Dickinson Park and Recreation
Edina
Elmhurst Park District
Foothills Park and Recreation District
Hollywood
Killington Vermont
Lakewood
Longshore

Metro Parks Tacoma
Miami Dade
Michigan State University
Mill Valley Recreation
Mundelein Parks and Recreation District
Myrtle Beach
NAS Pensacola MWR
New Braunfels
North Charleston
North Salt Lake (City)
Overland Park
Palm Beach
Palm Beach County
Pierce County
Poplar Bluff, Missouri
Prince William County VA
Quincy/Adams
Rock Island Park and Recreation
Salt Lake County
San Antonio

Scott County
Sherburne County
Sioux Falls, SD
South Suburban
Town of Ocean City
US Army Garrison - West Point
Visalia/Tulare
Washtenaw County
West Palm Beach
Westmon Park District
Wyandotte county

Got Any



Call Or Email Us



J. J. Keegan, Managing Principal
4215 Morningstar Drive
Castle Rock, CO 80108
t 303-283-8880
c 303-596-4015
jjkeegan@jjkeegan.com